

POA-2014-299 FIG. 3 OF 6



1.0 FT DRAINAGE ESMT.

WETLANDS
PROPOSED TO BE
FILLED (1.38 acres)



CPEP PIPE UNDER ROAD

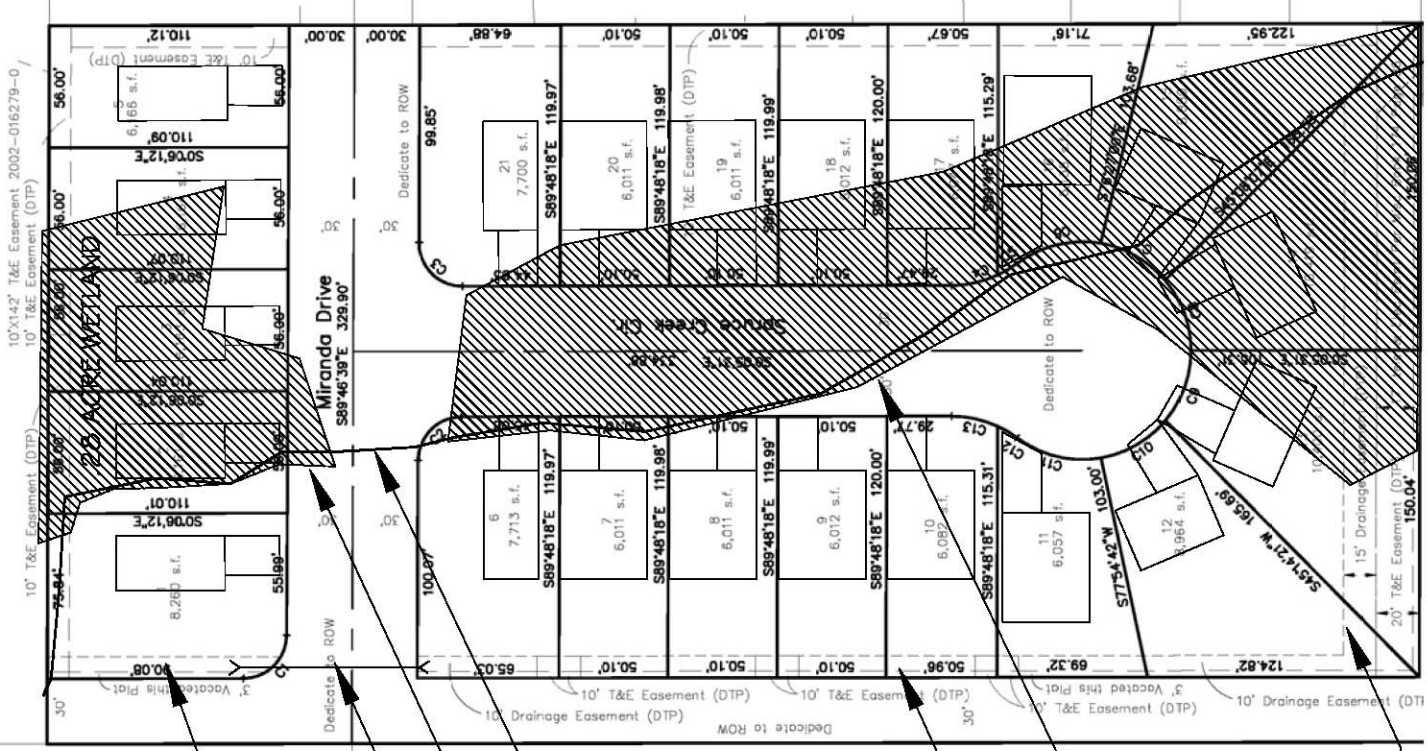
.28 ACRE WETLAND

WATER COURSE TO BE RELOCATED
LENGTH: 755 FT APPROX.
WIDTH: 1-3 FT APPROX.
AREA: 0.26 ACRES

1.0 FT DRAINAGE ESMT.

1.1 ACRE WETLAND

1.5 FT DRAINAGE ESMT.

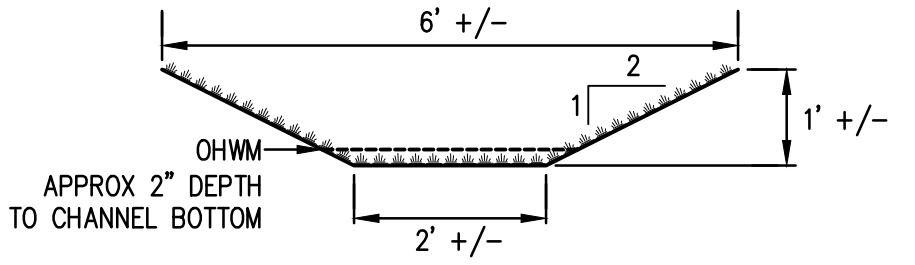
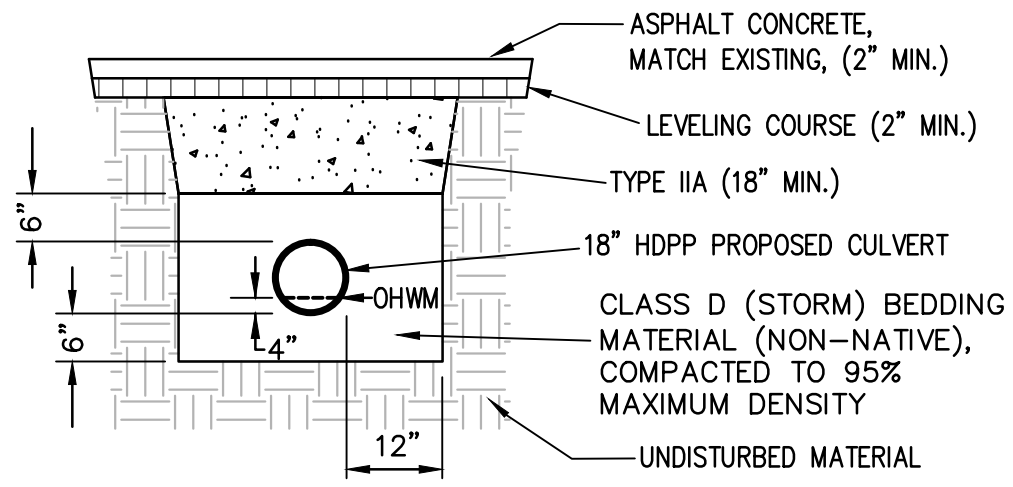
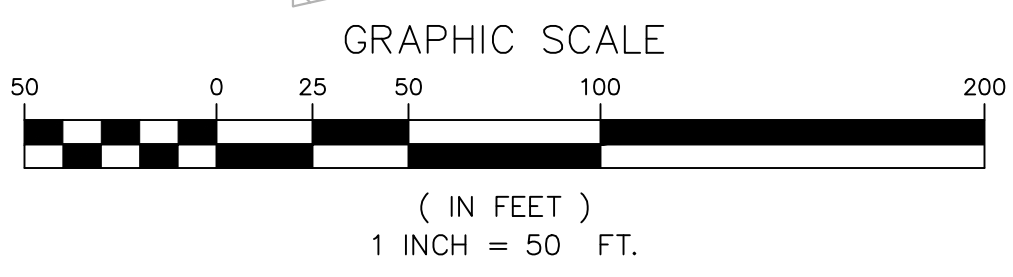
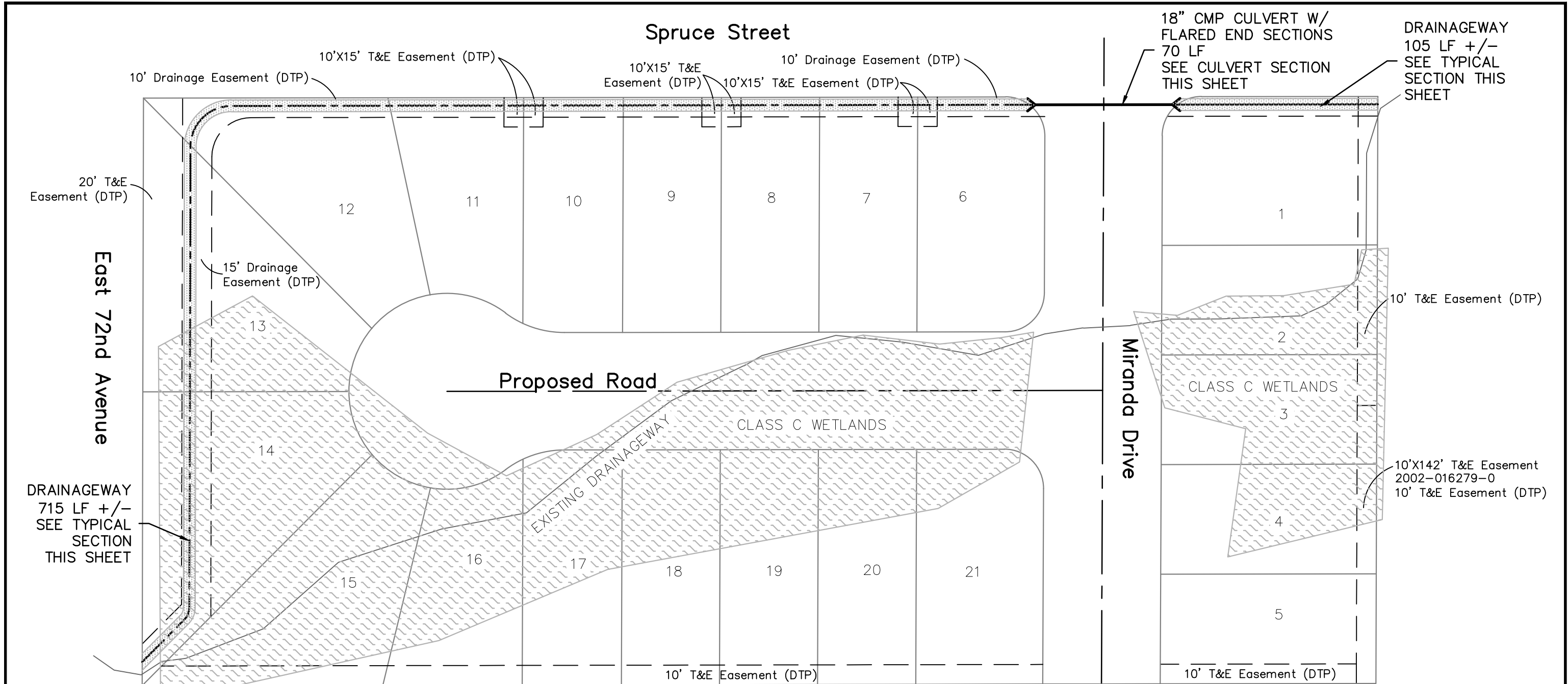


POA-2014-299

Fig 4 of 6

**Spruce Creek Subdivision
Alternative 1. Relocation of
Watercourse (Proposed Action)**

Applicant: Andre Spinelli, Spinell Homes
Waterway: North Fork Little Campbell
Creek
Proposed Activity: Subdivision
Sec. 4 T. 12N R. 3W M. Seward Meridian
Lat. : N 61.1562 Long. : W -149.8182
Sheet No. 4 of 9 Date: 4/8/15

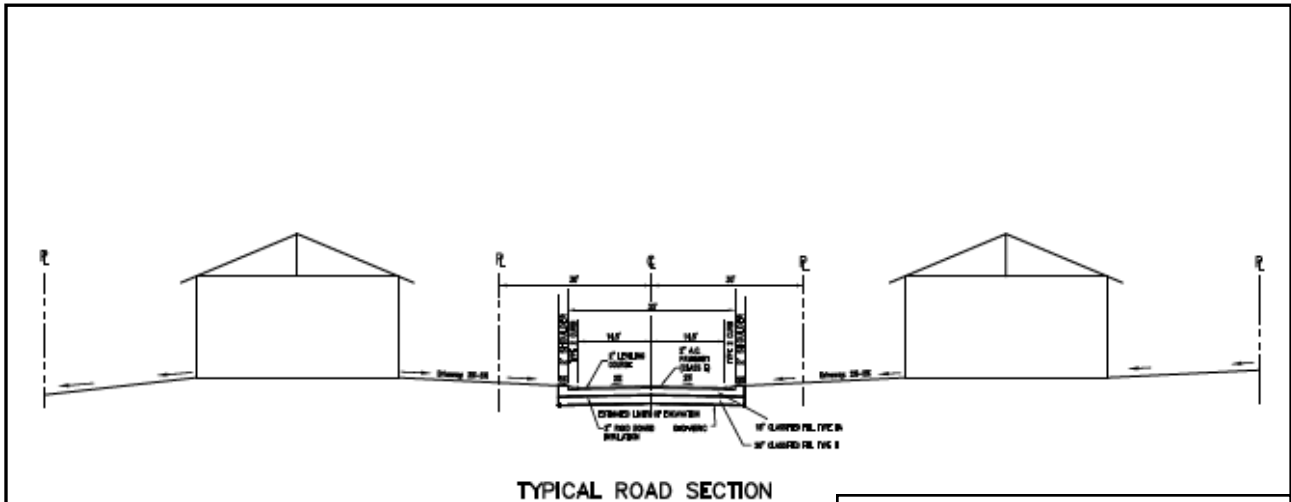


GENERAL NOTES
 1. DRAINAGEWAY SHALL BE HYDRO-SEEDED.

DRAINAGEWAY TYPICAL SECTION
 SCALE: 1" = 2'

OHWM = ORDINARY HIGH WATER MARK

Applicant: Andre Spinell, Spinell Homes
 Waterway: North Fork Little Campbell Creek
 Proposed Activity: Subdivision
 Sec 4T. 12N. 3W M. Seward Meridian
 Lat: N61.1562 Long: W-149.8182
 Sheet 5 of 9 Date: 3/31/15



TYPICAL ROAD SECTION

Spruce Creek Subdivision
Typical Road Section

Applicant: Andre Spinelli, Spinell Homes
 Waterway: North Fork Little Campbell Creek
 Proposed Activity: Subdivision
 Sec. 4 T. 12N R. 3W M. Seward Meridian
 Lat. : N 61.1562 Long.: W -149.8182
 Sheet No. 6 of 9 Date: 3/30/15